

**COLLECTION**  
**2021-2022**



**DYNASTAR**

**SPEED**



**CHAMONIX**

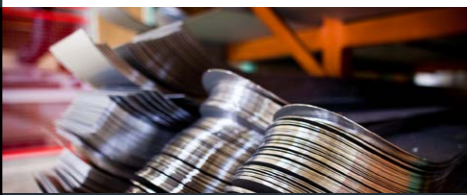


**DARING**



**MADE IN FRANCE**

**PASSION**



**AUTHENTICITY**



# 58 YEARS OF FRENCH-STYLE EXPERTISE



It has been in the shadow of Mont Blanc that Dynastar has constructed its history to become, over 50 years later, an exceptional brand and the only company of this size now producing skis that are “made in France”. Decade after decade, Dynastar skis have created a legend based on innovation and authenticity, carrying along in this unlimited passion all skiers seeking to fully embrace their love of skiing. From the very beginning, a close collaboration has existed between the brand and the athletes within the Dynastar family. These athletes are involved throughout the entire product design process, from the initial brief to marketing and on-snow tests.

Today, more than ever, Dynastar remains an expert in its craft. Mont Blanc has been a historic and enduring symbol of the sporting mountain spirit the pioneering founders so strongly infused in the brand. For this high-technology company, the Mont Blanc range and Chamonix represent a real-life test laboratory, a terrain of experiences, a source of inspiration, a base camp and a reference. With an innate belief in mountain values, Dynastar employees share the same passion and are united in a common goal: to create a unique snow feel, the Dynastar signature.

The Dynastar Family



## CONTENT

**INTRODUCTION**

**SKIS**

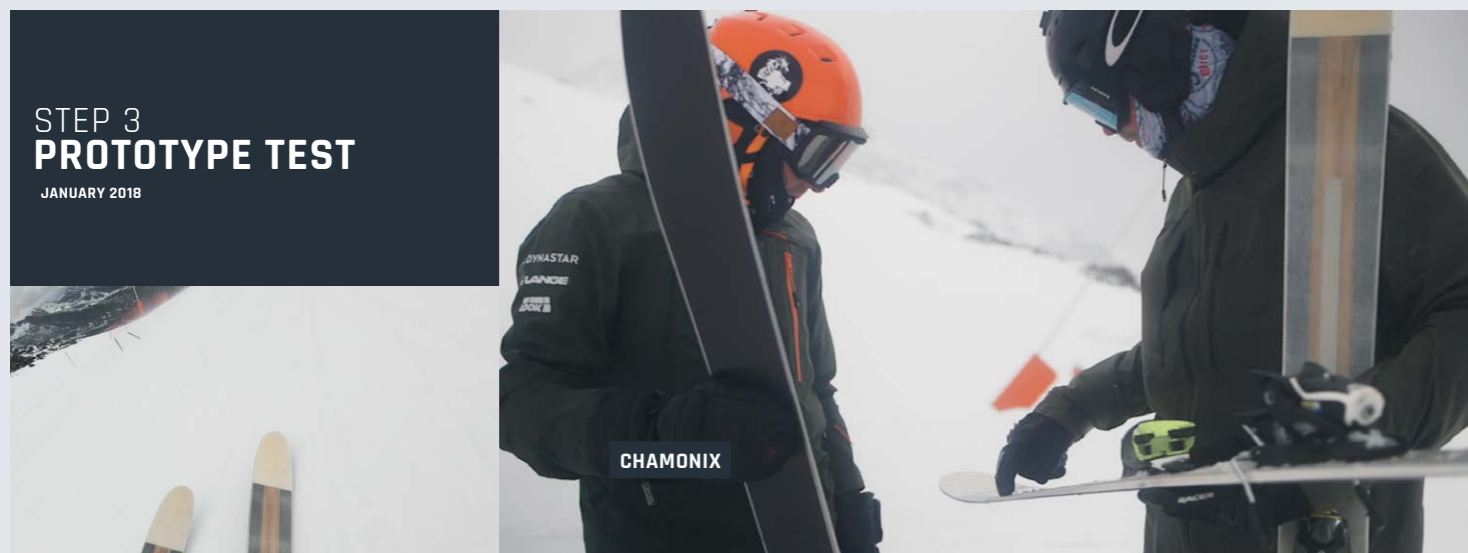
**POLES & TECHNICAL EQUIPMENT**

# STORY OF A SKI CREATION WITH VIVIAN BRUCHEZ



Two years of work at the heart of Chamonix Mont Blanc valley with one goal:  
**make you discover the unique Dynastar on snow feeling.**

Full video on our website

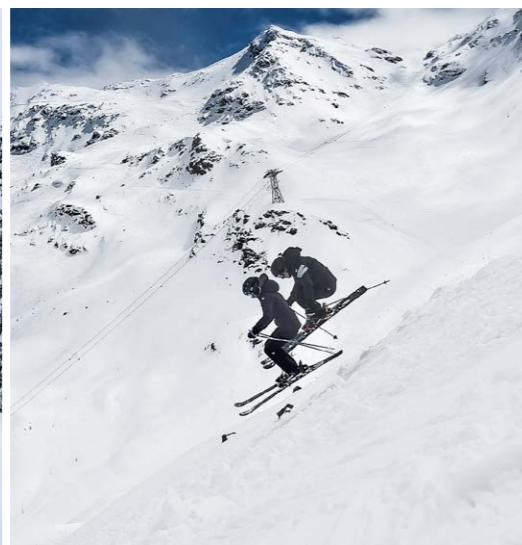


# A I N S I D E E

AN INVITATION TO EXPERIENCE  
THE UNIQUE DYNASTAR SKIS  
SIGNATURE!

**ALIVE IS THE CLOSEST DESCRIPTION OF SOMETHING THAT CAN'T  
BE PUT INTO WORDS, THE UNIQUE SUBSTANCE THAT WE INJECT  
INTO ALL OUR SKIS: LIFE.**

Under your feet, under our feet, here or over there, in the early morning or at the end of the day, on a cold January morning or a warm April afternoon, our playing field is continuously changing. It sets the rules and specifies how we should behave. The art of skiing is, therefore, above all about adapting to your environment, and this is the inspiration behind the design of Dynastar products.



## THE ALIVE TEST EXPERIENCE WHAT IS IT?

### an observation

80% of consumers test skis before buying them!

### a fact

Dynastar goes through all of these reviews to improve and **optimise its products.**

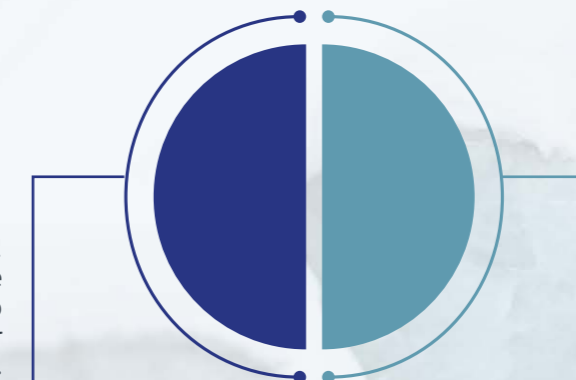
### an issue

Offering skiers an opportunity to **experience the unique skiability of Dynastar skis is our primary goal.**



**Organise test sessions for consumers**  
in the various ski resorts (see the calendar on the Dynastar Facebook page)

Test, ski and score!  
Consumers are invited to give submit their opinion on an app at the end of the test, online or through our in-store terminals.



Dynastar goes through all of these reviews to improve and optimise its products.



**50%**

of testers  
leave a review



**50%**

of consumers  
consider customer reviews  
when buying skis



*Live the Alive experience*



**By leaving a review, consumers can access unique experiences through us, such as discovering what goes on behind the scenes at the brand or testing next year's collection.**

# OUR TECHNOLOGIES

## HYBRID CORE

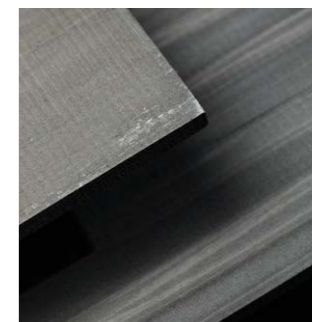


**HYBRID  
CORE**

Our best solution for a unique on-snow feeling: blending the performance of wood with the lightness and smooth snow feel of PU.



+



**WOOD = POWER  
AND AGILITY**

Wood is the best material to bring power and agility.

**PU = LIGHTNESS AND  
SMOOTH SNOW FEEL**

PU is a soft material that is used in many industries. Recognised for its light weight and damping properties, it ideally complements the properties of wood to deliver a smooth on-snow feeling.

=

*unique on-snow feeling*

**VARIOUS SOLUTIONS**  
*for unique thrills*

Exploring different species of wood enables us to give each product its own skiability.



M-PRO 108

PU - POPLAR



M-PRO 99

PU - POPLAR



M-TOUR 99

PU - PAULOWNIA



M-VERTICAL 88

PU - PAULOWNIA



SPEED 963

PU - POPLAR



SPEED 4X4 763

PU - PAULOWNIA

# OUR TECHNOLOGIES

## REINFORCEMENT

### ROCKET FRAME TI

An ingenious blend of power generated by the titanal and a specific geometry designed to lighten the ski. Guaranteed high level of Freeride performance for the M-PRO range.



### V TECH

Straight from the factory in Sallanches in the Mont Blanc Valley, this new technology is underpinned by reinforced arms to provide rigidity, power and torsional control over the body of the ski while freeing up the extremities. This allows the weight of the tip and tail to be reduced, resulting in a gain in both comfort and agility.



### BASALT FIBRE (SECOND GENERATION)

Similar mechanical properties to fibreglass but with a reduced weight (-25%). It also offers absorption properties, to create the ideal reinforcement for Touring/Free Touring.



### FULL TITANAL LAYER

2 full width/full length titanal layers on each side of the core mixed with our traditional sandwich construction. They provide excellent stability on turns and greatly reduce torsional effects on the ski. The base technology used mainly in Racing.



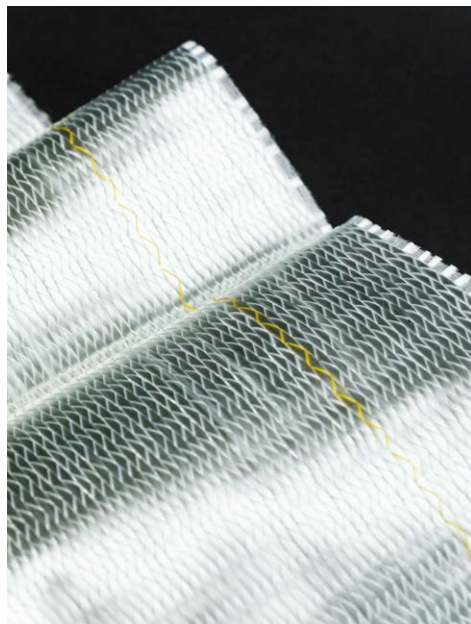
### CARBON FIBRE

The Formula 1 of fibres, guaranteeing superior skiability. A light weight and unbeatable mechanical rigidity properties. The carbon fibre offers breathtaking performance. The secret of Dynastar's ski mountaineering successes!



### FIBREGLASS

The essential fibre. Glass filaments braided according to different weights to bring the ski a perfect balance of resistance, elasticity and dynamism.



# OUR TECHNOLOGIES

## CORES

### ASH WOOD

Core with a density of 730 g/m<sup>3</sup>, used for its resistance and elasticity properties on FIS and Master skis.



### MICROCELL

An extremely light foam core with a density of 100 g/m<sup>3</sup>. Used in ski mountaineering for record weights or together with polyurethane to create lighter piste skis for women.



### POPLAR WOOD

Traditional core with a density of 450 g/m<sup>3</sup>, offering an excellent balance of elasticity, resistance and weight.



### BEECH WOOD

Core with a density of 710 g/m<sup>3</sup>, increasingly used on FIS skis. It has very similar properties to Ash: hardness, elasticity, resistance.



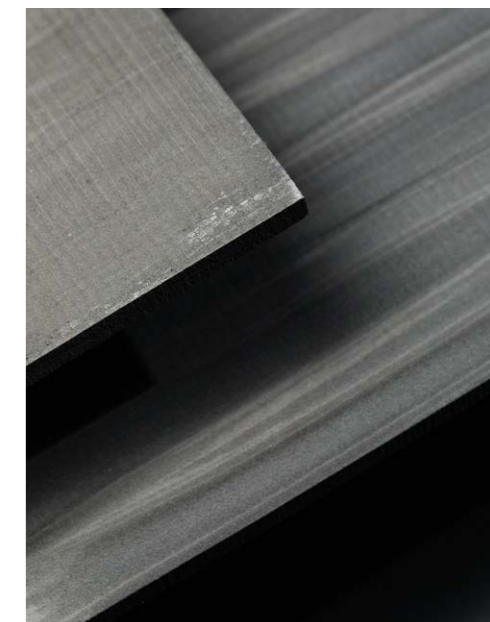
### PAULOWNIA WOOD

Core with a density of 300 g/m<sup>3</sup>, reducing the ski's weight by an average of 15 to 20% in comparison to a poplar core. Offering similar mechanical properties, it is an essential choice for Touring/Free Touring.



### POLYURETHANE (ACTIVE AIR CORE)

This new low-density polyurethane composition significantly reduces the weight of the ski (-50 g on piste skis in a size of 170). Used on its own or together with wood (Hybrid Core) to maximise lightness and product-specific performance, it provides exceptional comfort thanks to its ability to absorb vibrations.



# SEGMENTATION MEN



ASPIRATIONAL

BEST

BETTER

GOOD



**RACE/MASTER**

**SPEED**

**SPEED 4X4**

**M-PRO**

**M-FREE**

**M-TOUR**

**MENACE**

**VERTICAL  
PIERRA MENTA**

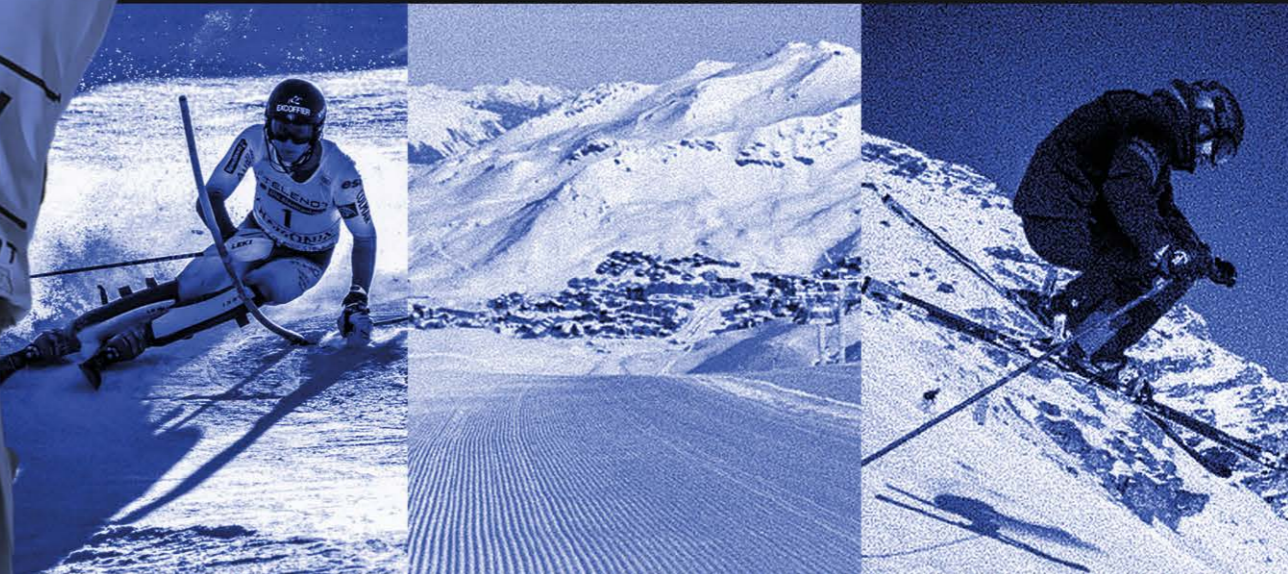
**FEEED  
YOUR  
SPEED**



**START  
START  
START  
START**



**SPEED RACE  
SPEED  
SPEED 4X4**







# piste SPEED

From the first turn to the last, from dawn to dusk, slope after slope, we can never get enough. Our body is working to generate energy and accelerate; our movements are coordinated and flowing... Turn after turn, from right to left and from top to bottom. All our senses are sharpened, we are striving for the perfect movement, the optimal flow. We feed on adrenaline. We carve each turn with determination and are obsessed by speed. We apply the same demanding standards to both ourselves and our equipment: we set our sights high. Feed your speed



### **SANDWICH**

PRECISION  
SECURITY  
POWER

### **HYBRID CORE**

POWER  
AGILITY  
LIGHTNESS

### **V-TECH**

RIGIDITY  
COMFORT  
TORSION

### **TIP ROCKER**

POWER  
AGILITY

### TECHNOLOGIES



HYBRID CORE



V-TECH

# PISTE

## SPEED



### SPEED 963

**Sizes** [ 156-162-168-173 ]  
**Sidecut** [ 122-68-104 ]  
**Radius** [ 11m | 12m | 13m | 14m ]  
**Weight** [ 3300g/p | 3400g/p | 3500g/p | 3600g/p ]

**Technologies**  
 HYBRID CORE - HYBRID POPLAR PU -  
 V TECH - FIBERGLASS - SANDWICH  
 FULL SIDEWALL

SKI ONLY **DAKZ001**

SPEED 963 (KONECT)

KIT 1 **DRKZ008**

NX 12 KONECT GW B80 (FCCKN03)

KIT 2 **DRKZ001**

SPX 12 KONECT GW B80 (FCCKS02)



### SPEED 763

**Sizes** [ 158-166-174-182 ]  
**Sidecut** [ 121-72-106 ]  
**Radius** [ 12m | 14m | 15m | 17m ]  
**Weight** [ 3700g/p | 3900g/p | 4000g/p | 4200g/p ]

**Technologies**  
 ACTIVE AIR CORE - PU LOW DENSITY  
 TITANAL INSERT - FIBERGLASS -  
 SANDWICH FULL SIDEWALL

SKI ONLY **DAKD201**

SPEED 763 (KONECT)

KIT 1 **DRKD202**

NX 12 KONECT GW B80 (FCCKN03)

KIT 2 **DRKD201**

SPX 12 KONECT GW B80 (FCCKS02)



### SPEED 563

**Sizes** [ 155-162-170-178 ]  
**Sidecut** [ 125-74-109 ]  
**Radius** [ 12m | 13m | 14m | 15m ]  
**Weight** [ 2900g/p | 3100g/p | 3200g/p | 3300g/p ]

**Technologies**  
 HYBRID CORE - HYBRID POPLAR PU -  
 V TECH - FIBERGLASS - SANDWICH  
 FULL SIDEWALL

SKI ONLY **DAKZ301**

SPEED 563 (KONECT)

KIT 1 **DRKZ301**

NX 12 KONECT GW B80 (FCCKN03)



### SPEED 363

**Sizes** [ 155-162-170-178 ]  
**Sidecut** [ 125-74-109 ]  
**Radius** [ 12m | 13m | 14m | 15m ]  
**Weight** [ 2900g/p | 3100g/p | 3200g/p | 3300g/p ]

**Technologies**  
 HYBRID CORE - HYBRID POPLAR PU -  
 V TECH - FIBERGLASS - SANDWICH  
 FULL SIDEWALL

SKI ONLY **DAKZ302**

SPEED 363 (XPRESS)

KIT 1 **DRKZ302**

XPRESS 11 GW B83 (FCCKX04)



### SPEED 263

**Sizes** [ 149-157-164-171-178 ]  
**Sidecut** [ 125-74-110 ]  
**Radius** [ 11m | 12m | 13m | 14m | 15m ]  
**Weight** [ 2700g/p | 2800g/p | 2900g/p | 3000g/p | 3100g/p ]

**Technologies**  
 WOOD CORE - POPLAR WOOD -  
 FIBERGLASS - CAP

SKI ONLY **DAKBT01**

SPEED 263 (XPRESS)

KIT 1 **DRKBT01**

XPRESS 10 GW B83 (FCCKX04)

# ALL MOUNTAIN

## SPEED 4X4



### SPEED 4X4 963

**Sizes** [ 164-171-179-185 ]  
**Sidecut** [ 130-82-110 ] [ 130-82-111 ]  
 [ 130-82-112 ] [ 130-82-113 ]  
**Radius** [ 13m ] [ 14m ] [ 16m ] [ 17m ]  
**Weight** [ 3900g/p ] [ 4100g/p ]  
 [ 4300g/p ] [ 4400g/p ]

**Technologies**  
 HYBRID CORE - HYBRID BEECH  
 PU - TITANAL INSERT - 3D PROFILE -  
 SANDWICH FULL SIDEWALL

**SKI ONLY** **DAKX101**  
 SPEED 4X4 963 (KONECT)  
**KIT 1** **DRKX101**  
 SPX 12 KONECT GW B90 (FCKCS01)



### SPEED 4X4 763

**Sizes** [ 164-171-179-185 ]  
**Sidecut** [ 130-82-110 ] [ 130-82-111 ]  
 [ 130-82-112 ] [ 130-82-113 ]  
**Radius** [ 13m ] [ 14m ] [ 16m ] [ 17m ]  
**Weight** [ 3700g/p ] [ 3900g/p ]  
 [ 4100g/p ] [ 4200g/p ]

**Technologies**  
 HYBRID CORE - HYBRID PAULOWNIA  
 PU - TITANAL INSERT - 3D PROFILE -  
 SANDWICH FULL SIDEWALL

**SKI ONLY** **DAKX201**  
 SPEED 4X4 763 (KONECT)  
**KIT 1** **DRKX202**  
 NX 12 KONECT GW B90 (FCCKN01)  
**KIT 2** **DRKX201**  
 SPX 12 KONECT GW B90 (FCKCS01)

# ALL MOUNTAIN

## SPEED 4X4



### SPEED 4X4 563

**Sizes** [ 158-164-171-179 ]  
**Sidecut** [ 122-78-106 ]  
**Radius** [ 13m ] [ 14m ] [ 15m ] [ 17m ]  
**Weight** [ 3500g/p ] [ 3600g/p ]  
 [ 3800g/p ] [ 4000g/p ]

**Technologies**  
 HYBRID CORE - HYBRID SAPELLI PU -  
 3D PROFILE - CENTRAL SIDEWALL

**SKI ONLY** **DAKX301**  
 SPEED 4X4 563 (KONECT)  
**KIT 1** **DRKX301**  
 NX 12 KONECT GW B90 (FCCKN01)



### SPEED 4X4 363

**Sizes** [ 158-164-171-179 ]  
**Sidecut** [ 122-78-106 ]  
**Radius** [ 13m ] [ 14m ] [ 15m ] [ 17m ]  
**Weight** [ 3400g/p ] [ 3500g/p ]  
 [ 3700g/p ] [ 3900g/p ]

**Technologies**  
 HYBRID CORE - HYBRID SAPELLI PU -  
 3D PROFILE - CENTRAL SIDEWALL

**SKI ONLY** **DAKX302**  
 SPEED 4X4 363 (XPRESS)  
**KIT 1** **DRKX302**  
 XPRESS 11 GW B83 (FCKDX01)



**CLÉMENT NOËL**

## RACE SPEED WC

A rising star in French alpine skiing, Clément Noël is creating quite a sensation in the Slalom world with his impressive performances. Perpetuating the Brand's Racing heritage, he is following in the tracks of the great skiers who have raced on Dynastar and made their mark in alpine skiing history. After Jean-Noël Augert, Marc Girardelli and Jean-Pierre Vidal, it is now Clément's turn to write a new page under the Dynastar colours.



### focus SPEED OMEGLASS WC FIS SL

The Dynastar SPEED OMEGLASS WC FIS SL is positioned as the best slalom ski on the circuit. Clément Noël, winner of 6 Slalom World Cups, is currently the world's top slalom skier and every day he challenges our racing department teams in the field to deliver high-performance products. You too can enjoy all the benefits of the Powerdrive Race technologies: greater agility, freed up flex for completely controlled power and an incomparable snow feel.



**SANDWICH**

PRECISION  
SECURITY  
POWER

**WOOD CORE**

CONTROL

**POWERDRIVE**

COMFORT  
POWER  
ABSORPTION

**TIP ROCKER**

POWER  
AGILITY

# RACE

## SPEED WC



**SPEED OMEGLASS WC FIS SL R22**

**SPEED OMEGLASS WC SL R22**

**Sizes** | 165-157 | (FIS SL) | 150 | (SL)  
**Sidecut** | 118-67-104 | | 116-66-102 | | 115-66-101 |  
**Radius** | 13m | | 12m | | 11m |  
**Weight** | 4200g/p | | 4100g/p | | 4000g/p |

**Technologies** WOOD CORE - ASH WOOD - FULL TITANAL LAYER - FIBER - RECTANGULAR SIDEWALL

- SKI ONLY** DAKAI01
- SPEED OMEGLASS WC FIS SL (R22)
- KIT 1** DRKAI03
- SPX 12 ROCKRACE (FCIA006)
- KIT 2** DRKAI02
- SPX 15 ROCKRACE (FCIA005)

- SKI ONLY** DAJAH01
- SPEED OMEGLASS WC FIS SL (R22)
- KIT 1** DRJ02AH
- SPX 12 ROCKRACE (FCIA006)
- KIT 2** DRJ01AH
- SPX 15 ROCKRACE (FCIA005)

- SKI ONLY** DAKAI02
- SPEED OMEGLASS WC SL (R22)
- KIT 1** DRKAI06
- SPX 12 RACE TEST (FCHA029)
- KIT 2** DRKAI05
- SPX 12 ROCKRACE (FCIA006)
- KIT 3** DRKAI04
- SPX 12 ROCKRACE (FCKBS02)



**SPEED COURSE WC FIS GS FACTORY R22**

**SPEED COURSE WC FIS GS R22**

**Sizes** | 193 | (FIS GS FACTORY) | 188 | (FIS GS)  
**Sidecut** | 102-65-84 | | (FIS GS FACTORY) | 101-65-81 | (FIS GS)  
**Radius** | 30m |  
**Weight** | 5200g/p | | (FIS GS FACTORY) | 4400g/p | | (FIS GS)

**Technologies** WOOD CORE - ASH WOOD - FULL TITANAL LAYER - FIBER - RECTANGULAR SIDEWALL

- SKI ONLY** DAKGG01
- SPEED COURSE WC FIS GS FACTORY (R22)
- KIT 1** DRKGG01
- PX 18 WC ROCKRACE (FCKBP01)
- KIT 2** DRKGG02
- SPX 15 ROCKRACE (FCKBS01)

- SKI ONLY** DAKGH01
- SPEED COURSE WC FIS GS (R22)
- KIT 1** DRKGH02
- SPX 12 ROCKRACE (FCIA006)
- KIT 2** DRKGH01
- SPX 15 ROCKRACE (FCIA005)
- KIT 3** DRKGH03
- SPX 15 ROCKRACE (FCKBS01)

**SPEED COURSE WC GS R22**

**Sizes** | 185 | | 165-170-175-182 |  
**Sidecut** | 102-65-84 | | 106-65-87 | | 104-65-87 | | 102-65-85 | | 103-65-85 |  
**Radius** | 27m | | 19m | | 20m | | 23m | | 25m |  
**Weight** | 4400g/p | | 3800g/p | | 3900g/p | | 4000g/p | | 4200g/p |

**Technologies** WOOD CORE - BEECH WOOD - FULL TITANAL LAYER - FIBER - RECTANGULAR SIDEWALL

- SKI ONLY** DAJGB01
- SPEED COURSE WC GS (R22)
- KIT 1** DRJ01GB
- SPX 15 ROCKRACE (FCIA005)
- KIT 2** DRJ02GB
- SPX 12 ROCKRACE (FCIA006)

- SKI ONLY** DAJDP01
- SPEED COURSE WC GS (R22)
- KIT 1** DRJ01DP
- SPX 12 ROCKRACE (FCIA006)
- KIT 2** DRJ02DP
- SPX 12 RACE TEST (FCHA029)
- KIT 3** DRJ03DP
- SPX 15 ROCKRACE (FCIA005)
- KIT 4** DRKDP01
- SPX 12 ROCKRACE (FCKBS02)
- KIT 5** DRKDP02
- SPX 12 ROCKRACE (FCKBS01)



**SPEED OMEGLASS TEAM SL R21 PRO**

**Sizes** | 128-135-142-149 |  
**Sidecut** | 112-65-98 | | 113-65-99 | | 114-65-99 | | 115-65-100 | | 106-65-87 |  
**Radius** | 8m | | 9m | | 10m | | 11m |  
**Weight** | 3000g/p | | 3200g/p | | 3400g/p | | 3600g/p |

**Technologies** WOOD CORE - POPLAR WOOD - 1/2 TI - FIBER - RECTANGULAR SIDEWALL

- SKI ONLY** DAJAF01
- SPEED OMEGLASS TEAM SL (R21 PRO)
- KIT 1** DRJ01AF
- SPX 10 GW B73 (FCJA041)
- KIT 2** DRJ02AF
- NX 10 GW B73 (FCJA044)
- KIT 3** DRJ03AF
- NX 7 GW B73 (FCJA046)



**SPEED COURSE TEAM GS R21 PRO**

**Sizes** | 135-144-151-158-165 |  
**Sidecut** | 102-66-84 | | 101-64-84 | | 102-65-85 | | 104-65-86 | | 106-65-87 |  
**Radius** | 14m | | 15m | | 17m | | 18m | | 19m |  
**Weight** | 2200g/p | | 2400g/p | | 2500g/p | | 2600g/p | | 2700g/p |

**Technologies** WOOD CORE - POPLAR WOOD - 1/2 TI - FIBER - RECTANGULAR SIDEWALL

- SKI ONLY** DAJDM02
- SPEED COURSE TEAM GS (R21 PRO)
- KIT 1** DRJ02DM
- SPX 10 GW B73 (FCJA041)
- KIT 2** DRJ03DM
- NX 10 GW B73 (FCJA044)
- KIT 3** DRJ04DM
- NX 7 GW B73 (FCJA046)



**SPEED COURSE MASTER GS R22**

**Sizes** | 169-173-179-183 |  
**Sidecut** | 115-70-98 | | 115-70-98 | | 115-70-97 | | 115-71-96 |  
**Radius** | 15m | | 17m | | 19m | | 21m |  
**Weight** | 4300g/p | | 4400g/p | | 4600g/p | | 4700g/p |

**Technologies** WOOD CORE - ASH WOOD - FULL TITANAL LAYER - FIBER - RECTANGULAR SIDEWALL

- SKI ONLY** DAJHE01
- SPEED COURSE MASTER GS (R22)
- KIT 1** DRJ01HE
- SPX 15 ROCKRACE (FCIA005)
- KIT 2** DRJ02HE
- SPX 12 ROCKRACE (FCIA006)
- KIT 3** DRJ05HE
- SPX 12 RACE TEST (FCHA029)
- KIT 4** DRKHE01
- SPX 15 ROCKRACE (FCKBS01)



**SPEED COURSE MASTER GS KONECT**

**Sizes** | 169-173-179-183 |  
**Sidecut** | 115-70-98 | | 115-70-98 | | 115-70-97 | | 115-71-96 |  
**Radius** | 15m | | 17m | | 19m | | 21m |  
**Weight** | 3900g/p | | 4000g/p | | 4200g/p | | 4300g/p |

**Technologies** WOOD CORE - ASH WOOD - FULL TITANAL LAYER - FIBER - RECTANGULAR SIDEWALL

- SKI ONLY** DAJHE02
- SPEED COURSE MASTER GS (R22)
- KIT 1** DRJ03HE
- SPX 12 KONECT GW B80 (FCIC006)
- KIT 2** DRKHE02
- SPX 12 KONECT GW B80 (FCKCS02)

# RACE

## SPEED WC



**SPEED OMEGLASS MASTER SL R22**

**Sizes** | 158-162-168-173 |  
**Sidecut** | 121-67-105 |  
**Radius** | 11m | | 12m | | 13m | | 14m |  
**Weight** | 3500g/p | | 3600g/p | | 3700g/p | | 3800g/p |

**Technologies** WOOD CORE - ASH WOOD - FULL TITANAL LAYER - DIAGO FIBER - SANDWICH FULL SIDEWALL

- SKI ONLY** DAKZ003
- SPEED OMEGLASS MASTER SL (R22)
- KIT 1** DRKZ006
- SPX 12 ROCKRACE (FCKBS02)
- KIT 2** DRKZ005
- SPX 15 ROCKRACE (FCKBS01)



**SPEED OMEGLASS MASTER SL KONECT**

**Sizes** | 156-162-168-173 |  
**Sidecut** | 121-67-105 |  
**Radius** | 11m | | 12m | | 13m | | 14m |  
**Weight** | 3300g/p | | 3400g/p | | 3500g/p | | 3600g/p |

**Technologies** WOOD CORE - ASH WOOD - FULL TITANAL LAYER - DIAGO FIBER - SANDWICH FULL SIDEWALL

- SKI ONLY** DAKZ004
- SPEED OMEGLASS MASTER SL (KONECT)
- KIT 1** DRKZ004
- SPX 12 KONECT GW B80 (FCIC006)



# HUNT YOUR LINE

When the desire for freedom hiding deep within each of us resurfaces, it drives us instinctively to explore the mountains. It's almost animalistic and there's nothing we can do to resist. Naturally passionate, profoundly imprinted with creativity and commitment, everyone is looking for their own line.

The perfect line: pure and unique. A subjective quest that belongs only to us and our own personal perception of the mountain. On the fringes of the crowd of skiers, it's time to invent your own path, one that no one else can see and depends only on you: become a line hunter.

M-Line has designed its 4 ranges with this in mind: M-FREE, M-PRO, M-TOUR and M-VERTICAL: a complete range of tailor-made tools to approach and feel the mountain in your own way.



# FREERIDE

## M-LINE FREE



### M-LINE FREE RANGE

The M-FREE range is meant for creative skiers searching for a playful, powerful and agile ski to help you get away from it all on virgin terrain and express your creativity with complete confidence. The result of a collaboration with the "talented Richard Permin", it offers two progressive freeride models, including Hybrid Core technology, suitable here for powder snow, steep slopes and snowy forests... or even chalet roofs.



#### M-FREE 118

Sizes [ 180-189 ]  
Sidecut [ 145-118-135 ]  
Radius [ 22m | 24m ]  
Weight [ 4500g/p | 4700g/p ]

**Technologies**  
WOOD CORE - POPLAR - DIAGO FIBER - SANDWICH FULL SIDEWALL

**SKI ONLY** DAJS001  
M-FREE 118  
**KIT 1** DRJ01S0  
PIVOT 15 GW B115 (FCJA004)

#### M-FREE 108

Sizes [ 172-182-192 ]  
Sidecut [ 138-108-128 ]  
Radius [ 16m | 18m | 20m ]  
Weight [ 4200g/p | 4400g/p | 4500g/p ]

**Technologies**  
HYBRID CORE - HYBRID POPLAR PU - FIBERGLASS TORSION BOX - SANDWICH FULL SIDEWALL

**SKI ONLY** DAJP101  
M-FREE 108  
**KIT 1** DRJ01P1  
SPX 12 GW B120 (FCIA010)  
**KIT 2** DRJ02P1  
PIVOT 15 GW B115 (FCJA004)  
**KIT 3** DRJ03P1  
HM ROTATION 12 D120 (FCIW103)

#### M-FREE 99

Sizes [ 171-179-185 ]  
Sidecut [ 128-99-120 ]  
Radius [ 15m | 17m | 18m ]  
Weight [ 3500g/p | 3700g/p | 3800g/p ]

**Technologies**  
HYBRID CORE - HYBRID POPLAR PU - FIBERGLASS TORSION BOX - SANDWICH FULL SIDEWALL

**SKI ONLY** DAKP201  
M-FREE 99  
**KIT 1** DRKP204  
HM ROTATION 12 D105 (FCIW102)  
**KIT 2** DRKP202  
PIVOT 15 GW B115 (FCJA004)  
**KIT 3** DRKP201  
SPX 12 GW B100 (FCIA011)

#### SKIN M-FREE 108

**DKJW102**  
Sizes [ 172-182-192 ]

#### SKIN M-FREE 99

**DKKW101**  
Sizes [ 171-179-185 ]

# FREERIDE

## M-LINE PRO



### M-PRO RIDER

Sizes [ 192 ]  
Sidecut [ 132-105-122 ]  
Radius [ 27m ]  
Weight [ 4800g/p ]

**Technologies**  
WOOD CORE - POPLAR - FULL TITANAL LAYER -  
3D PROFILE - SANDWICH FULL SIDEWALL

SKI ONLY **DAJR101**  
M-PRO RIDER



### M-PRO 99

Sizes [ 162-170-178-186 ]  
Sidecut [ 125-97-115 ] [ 126-98-116 ]  
[ 127-99-117 ] [ 127-99-117 ]  
Radius [ 15m ] [ 18m ] [ 20m ] [ 22m ]  
Weight [ 3400g/p ] [ 3600g/p ]  
[ 3800g/p ] [ 4000g/p ]

**Technologies**  
HYBRID CORE - HYBRID POPLAR PU - TITANAL  
ROCKET FRAME - FIBERGLASS TORSION BOX -  
SANDWICH FULL SIDEWALL

SKI ONLY **DAJN201**  
M-PRO 99

KIT 1 **DRJ01N2**  
SPX 12 GW B100 (FCIA011)

KIT 2 **DRJ02N2**  
SPX 12 KONECT GW RENT SYS B100 (FCIR002)



### M-PRO 90

Sizes [ 162-170-178-186 ]  
Sidecut [ 118-88-108 ] [ 119-89-109 ]  
[ 120-90-110 ] [ 120-90-110 ]  
Radius [ 13m ] [ 16m ] [ 18m ] [ 21m ]  
Weight [ 3100g/p ] [ 3300g/p ]  
[ 3500g/p ] [ 3700g/p ]

**Technologies**  
HYBRID CORE - HYBRID POPLAR PU - TITANAL  
ROCKET FRAME - FIBERGLASS TORSION BOX -  
SANDWICH FULL SIDEWALL

SKI ONLY **DAJN301**  
M-PRO 90

KIT 1 **DRJ01N3**  
SPX 12 GW B90 (FCIA012)

KIT 2 **DRJ04N3**  
NX 12 GW B90 (FCIA021)



### SKIN M-PRO & M-TOUR 99

**DKJW101**  
Sizes [ 154-162-170-178-186 ]



### M-LINE PRO RANGE

Dynastar continues to make freeride a part of its history: a legend that this winter is developing into M-PRO... making it even better. Freeride adventurers will have new weapons on their feet, with an instinct sure to turn heads on the powder. Incisive, fast and powerful, the M-PRO range and its Hybrid Core (Poplar/PU) complete with a Rocket Frame (TI/Insert) will withstand high-speed curves and committed landings on any kind of snow...





# FREERIDE

## M-LINE TOUR



### M-TOUR 99

**Sizes** [162-170-178-186]  
**Sidecut** [125-97-115] [126-98-116]  
 [127-99-117] [127-99-117]  
**Radius** [15m] [18m] [20m] [22m]  
**Weight** [2400g/p] [2500g/p]  
 [2600g/p] [2700g/p]

**Technologies**  
 HYBRID CORE - HYBRID PAULOWNIA PU - BASALT FIBER ISOMATEX - FIBERGLASS TORSION BOX - 3D PROFILE - SANDWICH FULL SIDEWALL

**SKI ONLY** **DAJT101**

**M-TOUR 99**

**KIT 1** **DRJ01T1**

**HM ROTATION 12 D105 (FCIW102)**

**KIT 2** **DRJ02T1**

**HM ROTATION 10 DEMO D105 (FCIW105)**

### M-TOUR 87 CA

**Sizes** [171-179]  
**Sidecut** [127-87-103]  
**Radius** [14m] [15m]  
**Weight** [2400g/p] [2500g/p]

**Technologies**  
 CARBON - PAULOWNIA - CARBON FIBER - FIBERGLASS TORSION BOX - SANDWICH FULL SIDEWALL

**SKI ONLY** **DAJL001**

**M-TOUR 87 Ca**

**KIT 1** **DRJ01L0**

**ST 10 (FCGW101)**

**KIT 2** **DRJ02L0**

**ST 10 DEMO D92 (FCJW102)**

### M-TOUR 86

**Sizes** [152-160-167-175-180]  
**Sidecut** [122-86-108]  
**Radius** [14m] [16m] [17m] [19m] [21m]  
**Weight** [2200g/p] [2300g/p]  
 [2500g/p] [2500g/p] [2700g/p]

**Technologies**  
 CELL PAULOWNIA - FIBERGLASS - CENTRAL SIDEWALL

**SKI ONLY** **DAKQR01**

**M-TOUR 86**

**KIT 1** **DRKQR01**

**ST 10 (FCGW101)**

**KIT 2** **DRKQR02**

**ST 10 DEMO D92 (FCJW102)**

### SKIN M-PRO & M-TOUR 99

**DKJW101**  
**Sizes** [154-162-170-178-186]

### SKIN M-TOUR 87 CA

**DKIW101**  
**Size** [171-179]

### SKIN M-TOUR 86

**DKKW104**  
**Size** [152-160-167-175-180]



# TOURING

## M-VERTICAL / PIERRA MENTA



### M-PIERRA MENTA

**Sizes** [150-160]  
**Sidecut** [96-65-79]  
**Radius** [20m] [23m]  
**Weight** [1320g/p] [1400g/p]

**Technologies**  
 CARBON - MICROCELL - CARBON FIBER - CARBON FIBER TORSION BOX - SANDWICH FULL SIDEWALL

**SKI ONLY** **DAJZT01**

**M-PIERRA MENTA**

### M-VERTICAL 88

**Sizes** [156-164-172-180]  
**Sidecut** [120-88-110]  
**Radius** [16m] [18m] [20m] [22m]  
**Weight** [2100g/p] [2200g/p]  
 [2300g/p] [2400g/p]

**Technologies**  
 HYBRID CORE - HYBRID PAULOWNIA PU - BASALT FIBER ISOMATEX - FIBERGLASS TORSION BOX - 3D PROFILE - SANDWICH FULL SIDEWALL

**SKI ONLY** **DAJM301**

**M-VERTICAL 88**

**KIT 1** **DRJ01M3**

**SUPERLITE 13 (FCJW103)**

**KIT 2** **DRJ02M3**

**ST 10 DEMO D92 (FCJW102)**

### M-VERTICAL PRO

**Sizes** [154-162-170-178]  
**Sidecut** [114-82-102]  
**Radius** [16m] [18m] [20m] [22m]  
**Weight** [2100g/p] [2200g/p]  
 [2300g/p] [2400g/p]

**Technologies**  
 HYBRID CORE - HYBRID PAULOWNIA PU - HYBRID CARBON/FIBERGLASS - UD FIBERGLASS - FIBERGLASS TORSION BOX - 3D PROFILE - CENTRAL SIDEWALL

**SKI ONLY** **DAKM201**

**M-VERTICAL PRO**

**KIT 1** **DRKM201**

**ST 10 (FCGW101)**

**KIT 2** **DRKM202**

**ST 10 DEMO D92 (FCJW102)**

### M-VERTICAL

**Sizes** [154-162-170-178]  
**Sidecut** [114-82-102]  
**Radius** [16m] [18m] [20m] [22m]  
**Weight** [2300g/p] [2400g/p]  
 [2500g/p] [2600g/p]

**Technologies**  
 HYBRID CORE - HYBRID PAULOWNIA PU - FIBERGLASS TORSION BOX - 3D PROFILE - CENTRAL SIDEWALL

**SKI ONLY** **DAKM001**

**M-VERTICAL**

**KIT 1** **DRKM001**

**ST 10 (FCGW101)**



### SKIN PIERRA MENTA

**DKIW100**  
**Size** [160]

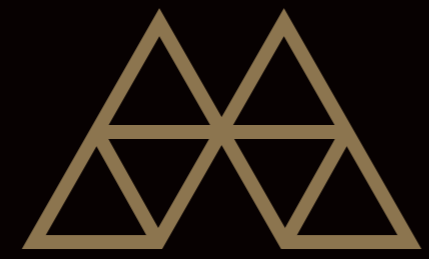


### SKIN M-VERTICAL 88

**DKJW103**  
**Sizes** [156-164-172-180]

### SKIN VERTICAL PRO

**DKIW103**  
**Sizes** [146-154-162-170-178]



**MENACE**



**M-MENACE 90**

**Sizes** [ 130-140-150-160-170-180 ]  
**Sidecut** [ 118-90-108 ] [ 118-90-108 ] [ 118-90-108-108 ] [ 118-90-108 ] [ 119-92-109 ] [ 119-92-109 ]  
**Radius** [ 10m ] [ 13m ] [ 16m ] [ 19m ] [ 23m ] [ 27m ]  
**Weight (OPEN)** [ 2800g/p ] [ 3000g/p ] [ 3100g/p ] [ 3200g/p ] [ 3300g/p ] [ 3500g/p ]  
**(XPRESS)** [ 3000g/p ] [ 3200g/p ] [ 3300g/p ] [ 3400g/p ] [ 3500g/p ] [ 3700g/p ]

**Technologies**  
 WOOD CORE - POPLAR - FIBERGLASS - CAP

- SKI ONLY **DAKQE01**
- M-MENACE 90 (OPEN)
- KIT 1 **DRKQE01**
- NX 10 GW B93 (FCJA032)

- SKI ONLY **DAKQE02**
- MENACE 90 (XPRESS)
- KIT 1 **DRKQE02**
- XPRESS 11 GW B93 (FCJD001)



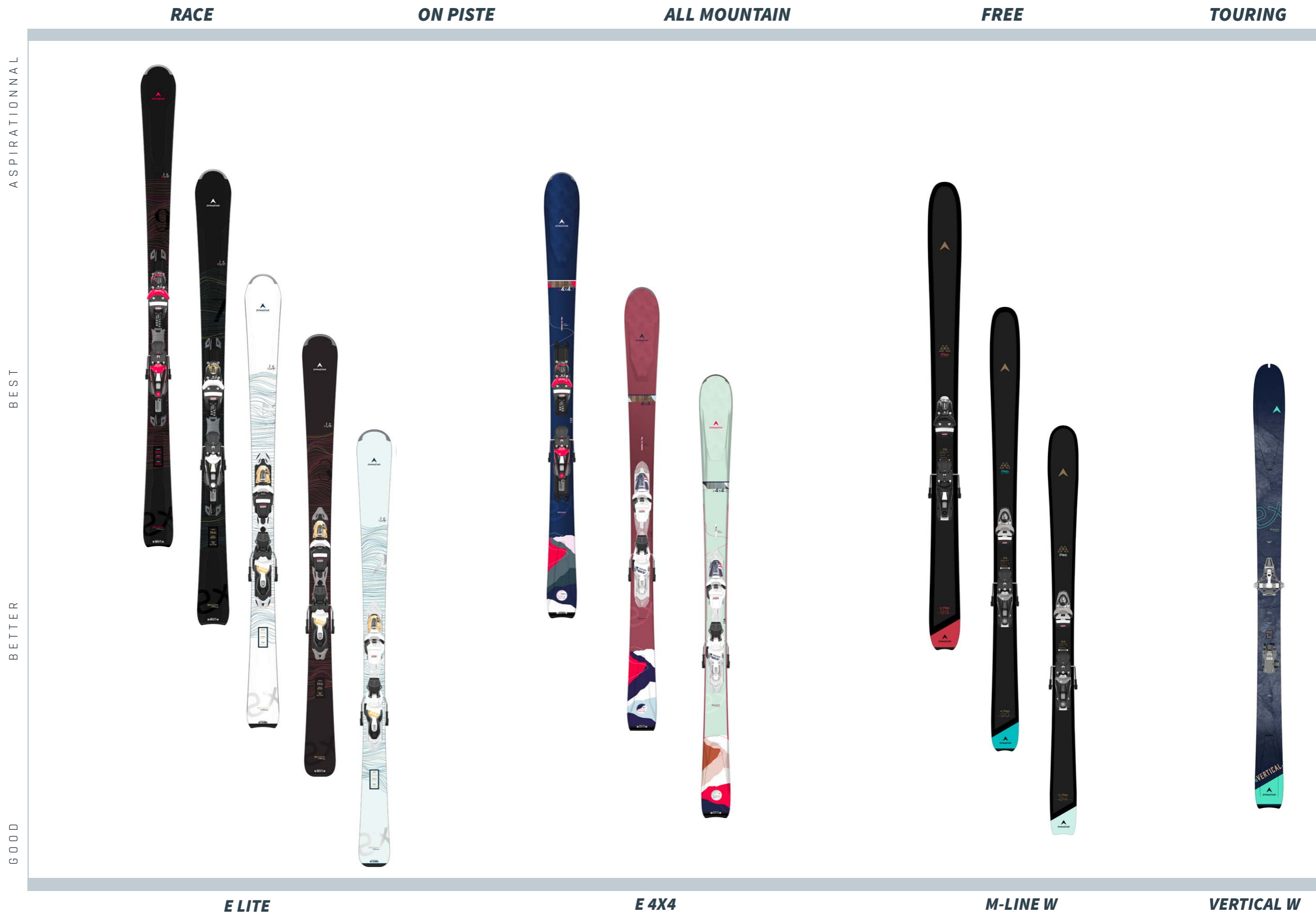
**M-MENACE 80**

**Sizes** [ 138-148-158-168-178 ]  
**Sidecut** [ 110-80-103 ]  
**Radius** [ 13m ] [ 15m ] [ 17m ] [ 20m ] [ 22m ]  
**Weight** [ 2600g/p ] [ 2700g/p ] [ 2800g/p ] [ 3000g/p ] [ 3100g/p ]

**Technologies**  
 WOOD CORE - POPLAR - FIBERGLASS - CAP

- SKI ONLY **DAKSP01**
- M-MENACE 80
- KIT 1 **DRKSP01**
- XPRESS 10 GW B83 (FCID014)

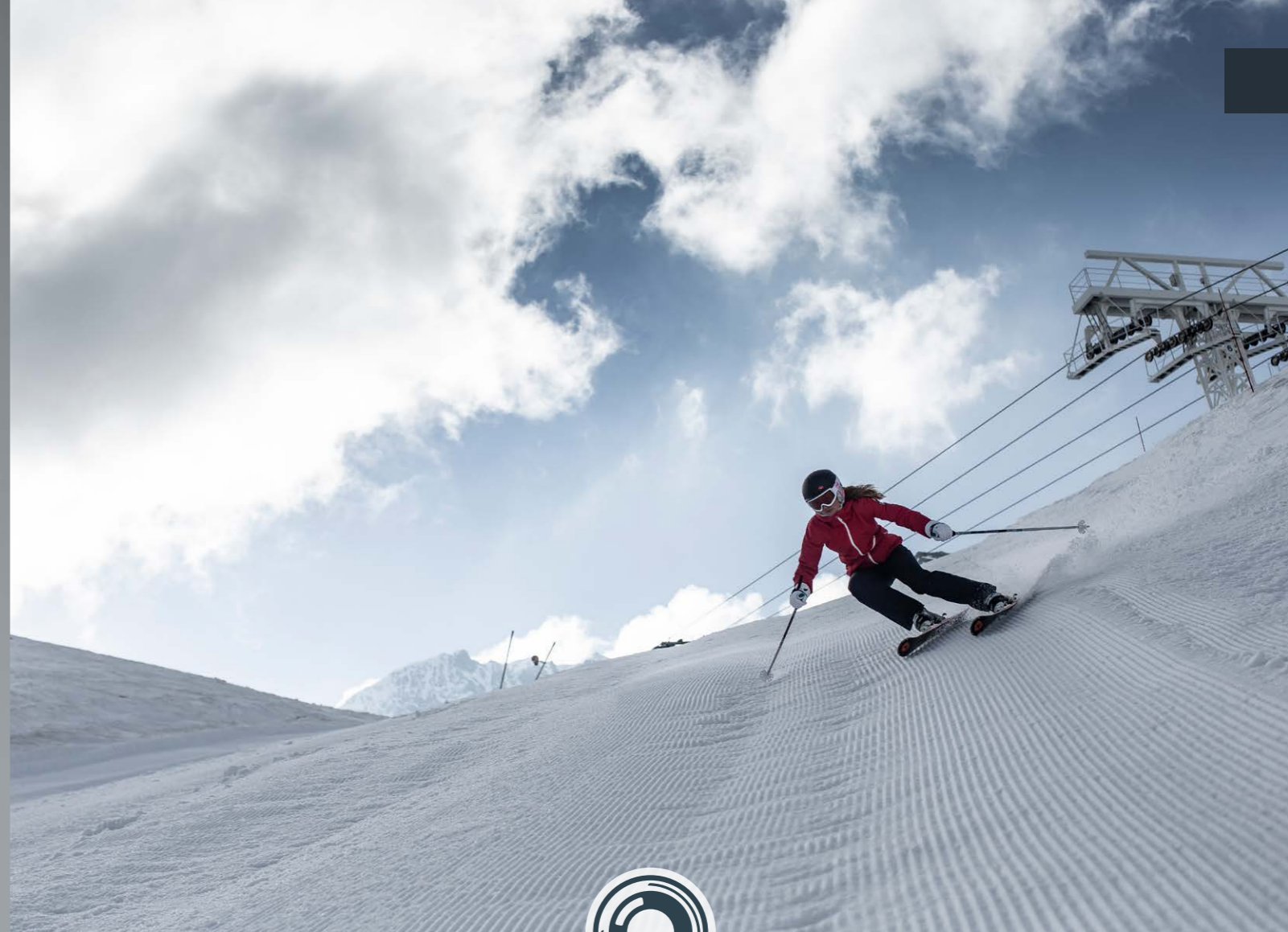
# SEGMENTATION WOMEN





## E LINE RANGE

From accessibility to performance, with no compromises on on-snow comfort, that's the promise of the brand-new E LITE range. Hybrid Core technology brings the skis the smooth snow feel skiers have come to expect from Dynastar products. The range is modern and elegant, with graphic elements creating a common identity from the first ski to the very last. Truly stylish, high-performance and durable weapons.



focus  
E LITE 7



### SANDWICH

PRECISION  
SECURITY  
POWER

### HYBRID CORE

POWER  
AGILITY  
LIGHTNESS

### TIP ROCKER

POWER  
AGILITY

## TECHNOLOGIES



HYBRID CORE



V-TECH

# PISTE E LITE



## E LITE 9

**Sizes** [155-160-165]  
**Sidecut** [122-68-104]  
**Radius** [11m | 12m | 13m]  
**Weight** [3300g/p | 3400g/p | 3500g/p]

**Technologies**  
 HYBRID CORE - HYBRID POPLAR  
 BI DIRECTIONNEL PU - V-TECH -  
 FIBERGLASS - SANDWICH FULL  
 SIDEWALL

**SKI ONLY** DAKZ002

E LITE 9 (KONECT)

**KIT 1** DRKZ002

NX 12 KONECT GW B80 (FCKCN05)



## E LITE 7

**Sizes** [149-155-162-170]  
**Sidecut** [125-74-109]  
**Radius** [11m | 12m | 13m | 14m]  
**Weight** [2800g/p | 2900g/p | 3100g/p | 3200g/p]

**Technologies**  
 HYBRID CORE - HYBRID POPLAR PU  
 - V-TECH - FIBERGLASS - SANDWICH  
 FULL SIDEWALL

**SKI ONLY** DAKZ303

E LITE 7 (KONECT)

**KIT 1** DRKZ303

NX 12 KONECT GW B80 (FCKCN06)



## E LITE 5

**Sizes** [149-155-162-170]  
**Sidecut** [125-74-109]  
**Radius** [11m | 12m | 13m | 14m]  
**Weight** [2800g/p | 2900g/p | 3100g/p | 3200g/p]

**Technologies**  
 HYBRID CORE - HYBRID POPLAR PU  
 - V-TECH - FIBERGLASS - SANDWICH  
 FULL SIDEWALL

**SKI ONLY** DAKZ304

E LITE 5 (XPRESS)

**KIT 1** DRKZ304

XPRESS W 11 GW B83 (FCKDW03)



## E LITE 3

**Sizes** [142-149-156-163]  
**Sidecut** [125-74-110]  
**Radius** [10m | 11m | 12m | 13m]  
**Weight** [2500g/p | 2700g/p | 2800g/p | 2900g/p]

**Technologies**  
 WOOD CORE - POPLAR - FIBERGLASS  
 - CAP

**SKI ONLY** DAKBT02

E LITE 3 (XPRESS)

**KIT 1** DRKBT02

XPRESS W 11 GW B83 (FCKDW03)



## E LITE 2

**Sizes** [142-149-156-163]  
**Sidecut** [125-74-110]  
**Radius** [10m | 11m | 12m | 13m]  
**Weight** [2500g/p | 2700g/p | 2800g/p | 2900g/p]

**Technologies**  
 WOOD CORE - POPLAR - FIBERGLASS  
 - CAP

**SKI ONLY** DAKBT03

E LITE 2 (XPRESS)

**KIT 1** DRKBT03

XPRESS W 10 GW B83 (FCKDW04)

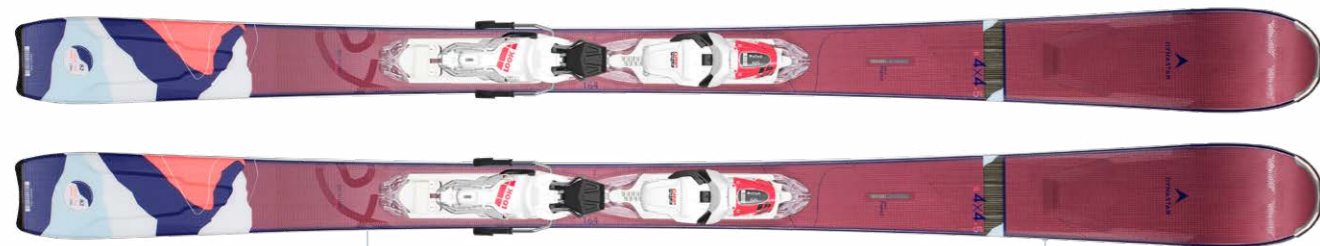
# all mountain w

## E 4x4

The ski E 4x4, setting a new standard for versatility, promising fun combined with control, in every hidden corner of the resort. Rediscover that Dynastar feeling in all conditions.



focus  
E 4x4-5



### HYBRID CORE

WOOD (BEECH) + PU  
POWER  
LIGHTNESS

### 3D PROFILE

### TECHNOLOGIES



HYBRID CORE



BASALT FIBER

# ALL MOUNTAIN WOMEN

## E 4X4



### E 4X4 7

Sizes [ 156-164-171 ]  
Sidecut [ 130-82-110 ]  
Radius [ 11m | 13m | 14m ]  
Weight [ 3500g/p | 3700g/p ]  
[ 3900g/p ]

#### Technologies

HYBRID CORE - HYBRID BEECH PU -  
TITANAL INSERT - POWERDRIVE 3  
MATERIAL SIDEWALLS - 3D PROFILE -  
BASALT FIBER - SANDWICH FULL  
SIDEWALL

SKI ONLY **DAKX205**

E 4x4 7 (KONECT)

KIT 1 **DRKX205**

NX 12 KONECT GW B90 (FCCKN04)



### E 4X4 5

Sizes [ 156-164-171 ]  
Sidecut [ 130-82-110 ]  
Radius [ 11m | 13m | 14m ]  
Weight [ 3500g/p | 3700g/p ]  
[ 3900g/p ]

#### Technologies

HYBRID CORE - HYBRID PAULOWNIA  
PU - TITANAL INSERT - POWERDRIVE 3  
MATERIAL SIDEWALLS - 3D PROFILE -  
BASALT FIBER - SANDWICH FULL  
SIDEWALL

SKI ONLY **DAKX202**

E 4x4 5 (XPRESS)

KIT 1 **DRKX203**

XPRESS W 11 GW B83 (FCKDW05)



### E 4X4 3

Sizes [ 150-158-164 ]  
Sidecut [ 122-78-106 ]  
Radius [ 11m | 13m | 14m ]  
Weight [ 3200g/p | 3400g/p ]  
[ 3500g/p ]

#### Technologies

HYBRID CORE - HYBRID SAPELLI PU -  
3D PROFILE - CENTRAL SIDEWALL

SKI ONLY **DAKX303**

E 4x4 3 (XPRESS)

KIT 1 **DRKX303**

XPRESS W 11 GW B83 (FCKDW05)

women  
freeride  
&  
touring  
**M-LINE PRO  
VERTICAL**



**M-PRO 99 W**

**Sizes** [ 154-162-170-178 ]  
**Sidecut** [ 125-97-115 ] [ 125-97-115 ]  
[ 126-98-116 ] [ 127-99-117 ]  
**Radius** [ 13m ] [ 15m ] [ 18m ] [ 20m ]  
**Weight** [ 3200g/p ] [ 3400g/p ]  
[ 3600g/p ] [ 3800g/p ]

**Technologies**  
HYBRID CORE - HYBRID POPLAR PU -  
TITANAL ROCKET FRAME - FIBERGLASS  
TORSION BOX - SANDWICH FULL  
SIDEWALL

**SKI ONLY** **DAJN202**

M-PRO 99 W

**KIT 1** **DRJ03N2**

NX 12 GW B100 (FCIA020)



**M-PRO 90 W**

**Sizes** [ 154-162-170 ]  
**Sidecut** [ 118-88-108 ] [ 118-88-108 ]  
[ 119-89-109 ]  
**Radius** [ 11m ] [ 13m ] [ 16m ]  
**Weight** [ 3000g/p ] [ 3100g/p ]  
[ 3300g/p ]

**Technologies**  
HYBRID CORE - HYBRID POPLAR PU -  
TITANAL ROCKET FRAME - FIBERGLASS  
TORSION BOX - SANDWICH FULL  
SIDEWALL

**SKI ONLY** **DAJN303**

M-PRO 90 W

**KIT 1** **DRJ05N3**

NX 11 GW B90 (FCJA034)



**E VERTICAL**

**Sizes** [ 154-162-170 ]  
**Sidecut** [ 114-82-102 ]  
**Radius** [ 16m ] [ 18m ] [ 20m ]  
**Weight** [ 2300g/p ] [ 2400g/p ]  
[ 2500g/p ]

**Technologies**  
HYBRID CORE - HYBRID PAULOWNIA  
PU - FIBERGLASS TORSION BOX - 3D  
PROFILE - CENTRAL SIDEWALL

**SKI ONLY** **DAKM002**

E VERTICAL

**KIT 1** **DRKM002**

ST 10 (FCGW101)



**SKIN E VERTICAL**

**DKIW103**

**Size** [ 154-162-170 ]

# JUNIOR

## BABY-KIDS-TEENS



# junior

## BABY-KIDS-TEENS

Kids have not been left out at Dynastar, with a range of skis designed to accompany them as their proficiency increases. From beginner to competition level, they will get a kick on the pistes with the TEAM series.

Dynastar's MENACE range offers tailored performance and skiability for intermediate to good girl and boy skiers, paving the way for amazing all-terrain days for the whole family.



**TEAM COMP**  
XPRESS JR/KID-X/OPEN

**Sizes** [ 120-130 ] (KID-X)  
[ 130-140-150-160 ] (XP JR)  
[ 110-120-130-140-150-160 ]  
**Sidecut** [ 111-67-97 ]  
**Radius** [ 9m ]  
**Weight** [ 2200g/p ] [ 2400g/p ] [ 2000g/p ]

**Technologies**  
WOOD CORE - POPLAR - FIBER - CAP

**SKI ONLY** **DAJBB01**  
TEAM COMP (XPRESS JR)  
**KIT 1** **DRJ01BB**  
XPRESS 7 GW B83 (FCJD050)

**SKI ONLY** **DAJBB02**  
TEAM COMP (KID-X)  
**SKI ONLY** **DRKBB01**  
KID 4 GW B76 (FCKKK01)

**SKI ONLY** **DAJBB03**  
TEAM COMP (OPEN)



**TEAM SPEED 100-130**  
KID-X  
**TEAM SPEED 130-150**  
XP JR

**Sizes**  
[ 100-110-120-130 ] (KID-X)  
[ 130-140-150 ] (XPRESS JR)  
**Sidecut** [ 108-67-94 ]  
**Radius** [ 10m ]  
**Weight** [ 1800g/p ] [ 1900g/p ]

**Technologies**  
ACTIVE AIR CORE - PU - CAP

**SKI ONLY** **DAJJY01**  
TEAM SPEED 100-130 (KID-X)  
**KIT 1** **DRKJY01**  
KID 4 GW B76 (FCKKK01)

**SKI ONLY** **DAJJY02**  
TEAM SPEED 130-150 (XP JR)  
**KIT 1** **DRJ02JY**  
XPRESS 7 GW B83 (FCJD050)



**M-MENACE TEAM**  
XP JR/KID-X

**Sizes** [ 128-140 ] (XP JR)  
[ 104-110-116-122-128-140 ] (KID-X)  
**Sidecut** [ 106-74-98 ]  
**Radius** [ 11m ] [ 14m ] (XP JR)  
[ 7m ] [ 8m ] [ 9m ] [ 10m ] [ 11m ] [ 14m ] (KID-X)  
**Weight** [ 2000g/p ] [ 2200g/p ] (XP JR)  
[ 1400g/p ] [ 1500g/p ] [ 1600g/p ] [ 1700g/p ] [ 1800g/p ] [ 2000g/p ] (KID-X)

**Technologies**  
ACTIVE AIR CORE - PU - CAP

**SKI ONLY** **DAKJC01**  
M-MENACE TEAM (XPRESS JR)  
**KIT 1** **DRKJC02**  
XPRESS 7 GW B83 (FCJD050)

**SKI ONLY** **DAKJC02**  
M-MENACE TEAM (KID-X)  
**KIT 1** **DRKJC03**  
KID 4 GW B76 (FCKKK01)

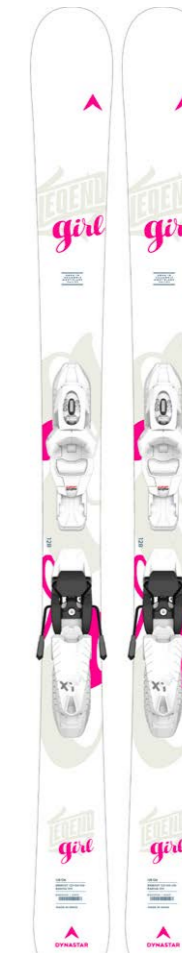


**M-MENACE TEAM**  
TEAM 4

**Sizes** [ 70-80-92 ]  
**Sidecut** [ 104-72-96 ]  
**Radius** [ 3m ] [ 4m ] [ 6m ]  
**Weight** [ 1200g/p ] [ 1300g/p ] [ 1400g/p ]

**Technologies**  
ACTIVE AIR CORE - PU - CAP

**SKI ONLY** **DAKWE01**  
M-MENACE TEAM (TEAM 4)



**LEGEND GIRL**  
XP JR/KID-X

**Sizes** [ 128-140 ] (XP JR)  
[ 104-110-116-122-128-140 ] (KID-X)  
**Sidecut** [ 106-74-98 ]  
**Radius** [ 11m ] [ 14m ] (XP JR)  
[ 7m ] [ 8m ] [ 9m ] [ 10m ] [ 11m ] [ 14m ] (KID-X)  
**Weight** [ 2000g/p ] [ 2200g/p ] (XP JR)  
[ 1400g/p ] [ 1500g/p ] [ 1600g/p ] [ 1700g/p ] [ 1800g/p ] [ 2000g/p ] (KID-X)

**Technologies**  
ACTIVE AIR CORE - PU - CAP

**SKI ONLY** **DAIJC04**  
LEGEND GIRL (XPRESS JR)  
**KIT 1** **DRJ05JC**  
XPRESS 7 GW B83 (FCJD051)

**SKI ONLY** **DAIJC03**  
LEGEND GIRL (KID-X)  
**KIT 1** **DRKJC01**  
KID 4 GW B76 (FCKKK02)



**MY FIRST LEGEND GIRL**  
TEAM 4

**Sizes** [ 70-80-92 ]  
**Sidecut** [ 104-72-96 ]  
**Radius** [ 3m ] [ 4m ] [ 6m ]  
**Weight** [ 1200g/p ] [ 1300g/p ] [ 1400g/p ]

**Technologies**  
ACTIVE AIR CORE - PU - CAP

**SKI ONLY** **DAJWE02**  
MY FIRST LEGEND GIRL (TEAM 4)



# DEMO RANGE

## WHITE COLLECTION

# RENTAL



### M-FREESKI WHITE

**Sizes** [154-162-170-178-186]  
**Sidecut** [118-88-108] [118-88-108] [119-89-109] [120-90-110] [120-90-110]  
**Radius** [11m] [13m] [16m] [18m] [21m]  
**Weight** [3000g/p] [3100g/p] [3300g/p] [3500g/p] [3700g/p]

**Technologies**  
 HYBRID CORE - HYBRID POPLAR  
 PU - TITANAL ROCKET FRAME -  
 FIBERGLASS TORSION BOX - 3D  
 PROFILE - SANDWICH FULL SIDEWALL

**SKI ONLY** DAKN302  
 M-FREESKI WHITE (XPRESS)  
**KIT 1** DRJ02N3  
 XPRESS 11 GW B93 (FCJD001)



### SPEED 4X4 763 WHITE

**Sizes** [164-171-179-185]  
**Sidecut** [130-82-110] [130-82-111] [130-82-112] [130-82-113]  
**Radius** [13m] [14m] [16m] [17m]  
**Weight** [3700g/p] [3900g/p] [4100g/p] [4200g/p]

**Technologies**  
 HYBRID CORE - HYBRID PAULOWNIA  
 PU - TITANAL INSERT - 3D PROFILE -  
 SANDWICH FULL SIDEWALL

**SKI ONLY** DAKX203  
 SPEED 4X4 763 WHITE (KONECT)  
**KIT 1** DRKX204  
 NX 12 KONECT GW B90 (FCKN001)



### SPEED 963 WHITE

**Sizes** [156-162-168-173]  
**Sidecut** [122-68-104]  
**Radius** [11m] [12m] [13m] [14m] [17m]  
**Weight** [3300g/p] [3400g/p] [3500g/p] [3600g/p]

**Technologies**  
 HYBRID CORE - HYBRID POPLAR PU  
 - V-TECH - FIBERGLASS - SANDWICH  
 FULL SIDEWALL

**SKI ONLY** DAKX005  
 SPEED 963 WHITE (KONECT)  
**KIT 1** DRKX009  
 NX 12 KONECT GW B80 (FCKN003)



### SPEED 4X4 363 RTL

**Sizes** [158-164-171-179]  
**Sidecut** [122-78-106]  
**Radius** [13m] [14m] [15m] [17m]  
**Weight** [3400g/p] [3500g/p] [3700g/p] [3900g/p]

**Technologies**  
 HYBRID CORE - HYBRID SAPELLI PU -  
 3D PROFILE - CENTRAL SIDEWALL

**SKI ONLY** DAKX304  
 SPEED 4X4 363 RTL (XPRESS)  
**KIT 1** DRKX304  
 XPRESS 11 GW B83 (FCID003)



### LEGEND 75 RL

**Sizes** [144-149-156-164-172]  
**Sidecut** [119-75-100]  
**Radius** [9m] [11m] [12m] [13m] [15m]  
**Weight** [2900g/p] [3000g/p] [3100g/p] [3300g/p] [3500g/p]

**Technologies**  
 ACTIVE AIR CORE - PU LOW DENSITY -  
 3D PROFILE - CAP

**SKI ONLY** DAIS402  
 LEGEND 75 RL (XPRESS)  
**KIT 1** DRI02S4  
 XPRESS 10 GW B83 (FCID014)

**SKI ONLY** DAIS401  
 LEGEND 75 RL

# POLES



For more than 50 years, Kerma has been developing increasingly light and rugged poles to meet the needs of all skiers. Kerma poles will help you up your game while giving expert skiers the ultimate in precision. Kerma is back this year with a range of poles combining performance, comfort and lightness.



TELESCOPIC



ROTATIONAL BASKET



SAFETY GRIP

This intuitive and efficient adjustment system allows you to adjust the size of the pole to your chosen discipline and different snow conditions. Ideal for climbs and downhill sections in freeriding as well as for younger skiers who grow from one season to the next.

Our rotating basket is aimed at all ski touring and freeride touring enthusiasts who dream of new summits and pristine powder fields. Its ball-joint construction, 32° rotation and excellent flexibility make it truly adaptable for hugging irregularities in the terrain. Guaranteed comfort, safety and stability for freeriders on both climbs and downhill sections.

The series of poles with the Safety Grip technology provides a new solution to allow skiers to quickly and easily release their hands from their poles in the event of a fall, an avalanche or if a pole becomes wedged between rocks. The system is designed for use in emergencies or risk situations, to bring skiers comfort and safety in all conditions. A sharp down and up movement is all that is required to release the safety grip from the handle.

# POLES

## RACE

DDJ1000

**SPEED ALU - ARAMIDE**



<b>Shaft Diameter</b>	ALUMINIUM & KEVLAR 14/16 MM RACE	<b>Strap Basket Tip</b>	VELCRO RACE 54 MM CARBURE	<b>Sizes</b>	115 - 135 CM
<b>Handle</b>				<b>Weight</b>	250 G

DDJ1010

**SPEED GS-SG SR**



<b>Shaft Diameter</b>	ALUMINIUM ZICRAL 18 MM RACE	<b>Strap Basket Tip</b>	VELCRO WOLD CUP 54 MM CARBURE	<b>Sizes</b>	115 - 135 CM
<b>Handle</b>				<b>Weight</b>	240 G

DDJ1020

**SPEED SL SR**



<b>Shaft Diameter</b>	ALUMINIUM ZICRAL 18 MM RACE	<b>Strap Basket Tip</b>	VELCRO RACE 54 MM CARBURE	<b>Sizes</b>	115 - 135 CM
<b>Handle</b>				<b>Weight</b>	245 G

DDJ1030

**SPEED**



<b>Shaft Diameter</b>	ALUMINIUM DURAL 18 MM K-GRIP	<b>Strap Basket Tip</b>	REGULAR REGULAR 60 MM ACIER	<b>Sizes</b>	115 - 135 CM
<b>Handle</b>				<b>Weight</b>	255 G

DDJ6000

**SPEED GS-SG JR**



<b>Shaft Diameter</b>	ALUMINIUM ZICRAL 16 MM RACE JR	<b>Strap Basket Tip</b>	REGULAR WOLD CUP 54 MM CARBURE	<b>Sizes</b>	90 - 110 CM
<b>Handle</b>				<b>Weight</b>	180 G

DDJ6010

**SPEED SL JR**



<b>Shaft Diameter</b>	ALUMINIUM ZICRAL 16 MM RACE JR	<b>Strap Basket Tip</b>	REGULAR COURSE 51 MM CARBURE	<b>Sizes</b>	90 - 110 CM
<b>Handle</b>				<b>Weight</b>	180 G

# PROTECTIONS



DKJP100

**KERMA LEG PROTECTION SR**

<b>Size</b>	M/L
<b>Weight</b>	0.600 KG



DKJP101

**KERMA LEG PROTECTION JR**

<b>Size</b>	S
<b>Weight</b>	0.500 KG



DKJP102

**KERMA HAND PROTECTION**

<b>Size</b>	TU
<b>Weight</b>	0.400 KG



DKJP104

**KERMA FOREARM PROTECTION SR**

<b>Size</b>	TU
<b>Weight</b>	0.300 KG



DKJP103

**KERMA FOREARM PROTECTION JR**

<b>Size</b>	TU
<b>Weight</b>	0.200 KG

# POLES

## PISTE

**DDJ2000**  
**VECTOR HYBRID 12**



<b>Shaft Diameter</b>	20% CARBON 14 MM	<b>Strap Basket</b>	PERFORMANCE ALL MOUNTAIN 60 MM FREE 85 MM	<b>Tip Sizes</b>	ACIER 110 - 135 CM
<b>Handle</b>	SAFETY FOAM GRIP			<b>Weight</b>	250 G

**DDJ2010**  
**VECTOR HYBRID 6**



<b>Shaft Diameter</b>	ALUMINIUM ZICRAL 16 MM	<b>Strap Basket</b>	ACTIVE ALL MOUNTAIN 60 MM FREE 85 MM	<b>Tip Sizes</b>	ACIER 110 - 135 CM
<b>Handle</b>	SAFETY FOAM GRIP			<b>Weight</b>	235 G

**DDJ2020**  
**VECTOR 4 GREY/BLUE**



**DDJ2030**  
**VECTOR 4 BLACK/WHITE**



<b>Shaft Diameter</b>	ALUMINIUM DURAL 18 MM	<b>Strap Basket</b>	ACTIVE ALL MOUNTAIN 60 MM ACIER	<b>Tip Sizes</b>	110 - 135 CM
<b>Handle</b>	BI MAT			<b>Weight</b>	255 G

**DDI2040**  
**VECTOR GREY**



**DDI2050**  
**VECTOR BLACK**



<b>Shaft Diameter</b>	ALUMINIUM DURAL 18 MM	<b>Strap Basket</b>	REGULAR REGULAR 60 MM ACIER	<b>Tip Sizes</b>	110 - 135 CM
<b>Handle</b>	K-GRIP			<b>Weight</b>	250 G

## FREERIDE

**DDJ3010**  
**CHAM 12 TELESCOPIC**



<b>Shaft Diameter</b>	ALUMINIUM DURAL 14/16 MM	<b>Strap Basket</b>	PERFORMANCE ROTATIONAL 85 MM CARBURE	<b>Tip Sizes</b>	TU 275 G
<b>Handle</b>	SAFETY FOAM GRIP				

# POLES

## FREERIDE

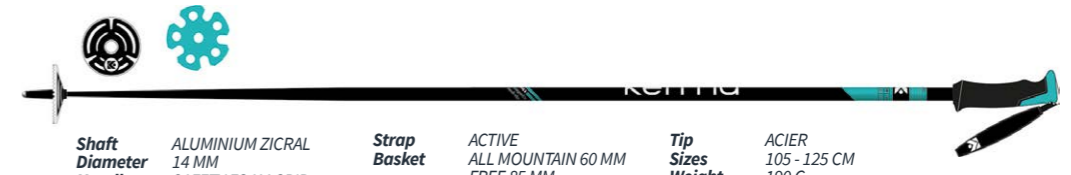
**DDJ3020**  
**CHAM 10**



<b>Shaft Diameter</b>	ALUMINIUM ZICRAL 18 MM	<b>Strap Basket</b>	REGULAR FREE 85 MM CARBURE	<b>Tip Sizes</b>	110 - 135 CM
<b>Handle</b>	LONG FOAM			<b>Weight</b>	215 G

## WOMEN

**DDJ5000**  
**ELITE HYBRID 6**

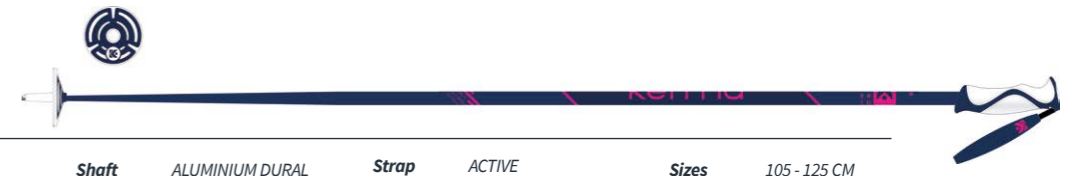


<b>Shaft Diameter</b>	ALUMINIUM ZICRAL 14 MM	<b>Strap Basket</b>	ACTIVE ALL MOUNTAIN 60 MM FREE 85 MM	<b>Tip Sizes</b>	ACIER 105 - 125 CM
<b>Handle</b>	SAFETY FOAM GRIP			<b>Weight</b>	190 G

**DDJ5010**  
**ELITE 4 BLACK**



**DDJ5020**  
**ELITE 4 BLUE**



<b>Shaft Diameter</b>	ALUMINIUM DURAL 16 MM	<b>Strap Basket</b>	ACTIVE ALL MOUNTAIN 60 MM ACIER	<b>Tip Sizes</b>	105 - 125 CM
<b>Handle</b>	WOMEN BI MAT			<b>Weight</b>	220 G

**DDJ5030**  
**ELITE 2 WHITE**



**DDJ5040**  
**ELITE 2 BLUE**



<b>Shaft Diameter</b>	ALUMINIUM DURAL 16 MM	<b>Strap Basket</b>	REGULAR REGULAR 60 MM ACIER	<b>Tip Sizes</b>	105 - 125 CM
<b>Handle</b>	WOMEN MONO MAT			<b>Weight</b>	220 G

# POLES

## JUNIOR



**DDI6000**  
**TELESCOPIC JR**

<b>Shaft Diameter Handle</b>	ALUMINIUM ZICRAL 12/14 MM JUNIOR	<b>Strap Basket Tip</b>	REGULAR JUNIOR 60 MM ACIER	<b>Sizes Weight</b>	TU 170 G
------------------------------	--	-------------------------	----------------------------------	---------------------	-------------



**DDJ6020**  
**SPEED TEAM**



**DDI6010**  
**VECTOR TEAM**



**DDI6020**  
**VECTOR TEAM GIRL**

<b>Shaft Diameter Handle</b>	ALUMINIUM DURAL 14 MM JUNIOR	<b>Strap Basket Tip</b>	REGULAR JUNIOR 60 MM ACIER	<b>Sizes Weight</b>	70 - 105 CM 165 G
------------------------------	------------------------------------	-------------------------	----------------------------------	---------------------	----------------------

## BOX



**DDK2000**  
**VECTOR BOX ECO 20 PAIRS**

<b>Matériau</b>	ALUMINIUM DURAL	<b>Rondelle</b>	REGULAR 60 MM
<b>Diamètre</b>	18 MM	<b>Pointe</b>	ACIER
<b>Poignée</b>	REGULAR	<b>Tailles</b>	TU
<b>Dragonne</b>	REGULAR	<b>Poids</b>	250 G

SIZE/COLOUR	105	110	115	120	125	130
WHITE/BLACK	-	-	1	2	2	1
PINK/WHITE	1	1	1	1	-	-
RED/BLACK	-	-	1	2	2	1
BLUE/WHITE	-	-	1	1	1	1



**DDI2060**  
**VECTOR BOX 20 PAIRS**

<b>Matériau</b>	ALUMINIUM DURAL	<b>Rondelle</b>	ALL MOUNTAIN 60 MM
<b>Diamètre</b>	18 MM	<b>Pointe</b>	ACIER
<b>Poignée</b>	BI MAT	<b>Tailles</b>	TU
<b>Dragonne</b>	REGULAR	<b>Poids</b>	245 G

SIZE/COLOUR	105	110	115	120	125	130
PINK	1	1	1	1	-	-
BLUE	-	-	1	1	1	1
RED	-	-	1	2	2	1
ORANGE	-	-	1	2	2	1

# POLES

## RENTAL



**DDI7000**  
**RENTAL SR**

<b>Shaft Diameter Handle</b>	ALUMINIUM ZICRAL 18 MM K-GRIP	<b>Strap Basket Tip</b>	REGULAR REGULAR 60 MM ACIER	<b>Sizes Weight</b>	110 - 140 CM 250 G
------------------------------	-------------------------------------	-------------------------	-----------------------------------	---------------------	-----------------------



**DDI7010**  
**RENTAL FIBER SR**

<b>Shaft Diameter Handle</b>	100% FIBRE DE VERRE 16 MM K-GRIP	<b>Strap Basket Tip</b>	REGULAR REGULAR 60 MM ACIER	<b>Sizes Weight</b>	110 - 140 CM 240 G
------------------------------	--	-------------------------	-----------------------------------	---------------------	-----------------------



**DDI7020**  
**RENTAL TELESCOPIC SR**

<b>Shaft Diameter Handle</b>	ALUMINIUM ZICRAL 16/18 MM K-GRIP	<b>Strap Basket Tip</b>	REGULAR REGULAR 60 MM ACIER	<b>Sizes Weight</b>	TU 290 G
------------------------------	--	-------------------------	-----------------------------------	---------------------	-------------



**DDI7030**  
**RENTAL JR**

<b>Shaft Diameter Handle</b>	ALUMINIUM ZICRAL 16 MM JUNIOR	<b>Strap Basket Tip</b>	REGULAR JUNIOR 60 MM ACIER	<b>Sizes Weight</b>	70 - 105 CM 170 G
------------------------------	-------------------------------------	-------------------------	----------------------------------	---------------------	----------------------



**DDI7040**  
**RENTAL FIBER JR**

<b>Shaft Diameter Handle</b>	100% FIBRE DE VERRE 14 MM JUNIOR	<b>Strap Basket Tip</b>	REGULAR JUNIOR 60 MM ACIER	<b>Sizes Weight</b>	70 - 105 CM 170 G
------------------------------	--	-------------------------	----------------------------------	---------------------	----------------------



**DDI7050**  
**RENTAL TELESCOPIC JR**

<b>Shaft Diameter Handle</b>	ALUMINIUM ZICRAL 16/14 MM JUNIOR	<b>Strap Basket Tip</b>	REGULAR JUNIOR 60 MM ACIER	<b>Sizes Weight</b>	TU 190 G
------------------------------	--	-------------------------	----------------------------------	---------------------	-------------

# BAGS

The Dynastar range of technical backpacks is specially designed to reduce bulk as far as possible and mould to the shape of the wearer's back for enhanced comfort. Each backpack in the range has specific features tailored to the requirements of different disciplines. You can find the perfect model for you, whether you need to carry straps, an ice axe, a hydration pack or anything else.

## BACK PACKS



**1** **DKJB300**  
**M-35 LIGHT**  
Capacity/Volume 35 L  
Size L320 x W210 x H620 mm  
Weight 0.87 KG

**2** **DKJB301**  
**M-22 LIGHT**  
Capacity/Volume 22 L  
Size L300 x W200 x H500 mm  
Weight 0.74 KG

## F-TEAM BAGS



**1** **DKKB100**  
**F-TEAM CARGO BAG**  
Capacity/Volume 130 L  
Size L810 x W410 x H400 mm  
Weight 5.90 KG

**2** **DKKB101**  
**F-TEAM CABIN BAG**  
Capacity/Volume 50 L  
Size L520 x W320 x H300 mm  
Weight 2.90 KG

**3** **DKKB103**  
**F-TEAM EXTENDABLE 2 PAIRS PADDED 160/210 CM**  
Capacity/Volume 2 PAIRS  
Size L1600-2100 x W220 x H220 mm  
Weight 1.40 KG

**4** **DKKB102**  
**F-TEAM EXTENDABLE 2 PAIRS PADDED WHEELED 170/220 CM**  
Capacity/Volume 2 PAIRS  
Size L1700-2200 x W360 x H220 mm  
Weight 3.70 KG

# BAGS

## SKI BAGS



**DKIB400**  
**BASIC SKI BAG 185 CM**

Capacity/Volume 1 PAIR  
Size L1900 x W20 x H320 mm  
Weight 1.20 KG



**DKJB201**  
**SPEEDZONE BASIC SKIBAG 185 CM**

Capacity/Volume 1 PAIR  
Size L1900 x W20 x H320 mm  
Weight 0.68 KG



**DKJB401**  
**INTENSE BASIC SKIBAG 160 CM**

Capacity/Volume 1 PAIR  
Size L1650 x W20 x H320 mm  
Weight 0.68 KG



**DKIB200**  
**EXTENDABLE 160/210 CM**

Capacity/Volume 1 PAIR  
Size L1600/2100 x W260 mm  
Weight 0.75 KG



**DKJB200**  
**SPEEDZONE SKIBAG EXTENDABLE 1 PAIR PADDED 160/210 CM**

Capacity/Volume 1 PAIR  
Size L1600/2100 x W185 x H185 mm  
Weight 0.99 KG



**DKJB400**  
**INTENSE SKIBAG EXTENDABLE 1 PAIR PADDED 160/210 CM**

Capacity/Volume 1 PAIR  
Size L1600/2100 x W185 x H185 mm  
Weight 0.94 KG



**DKIB000**  
**SKI STRAP**

Size L570 x W5 x H50 mm

# SIZE GRID

	BEGINNER	INTERMEDIARY	CONFIRMED	EXPERT
PISTE (SPEEDZONE / INTENSE)	YOUR SIZE - 10 CM	YOUR SIZE - 7 CM	YOUR SIZE	YOUR SIZE
FREERIDE / ALL MOUNTAIN (M-FREE - M-PRO / SPEEDZONE 4X4 - INTENSE 4X4)	YOUR SIZE - 10 CM	YOUR SIZE	YOUR SIZE	YOUR SIZE + 5 CM
FREESTYLE (MENACE)	YOUR SIZE - 10 CM	YOUR SIZE - 7 CM	YOUR SIZE - 7 CM	YOUR SIZE - 5 CM
SKI TOURING (M-TOUR / M-VERTICAL / PIERRA MENTA)	YOUR SIZE - 10 CM	YOUR SIZE - 7 CM	YOUR SIZE - 5 CM	YOUR SIZE

# MAPPING

## ACCESS TOOL BOX

### TOOL BOX AND B2B

#### SERVICES FOR YOU

#### A B2B E-COMMERCE PLATFORM

A free service complementing the daily service provided by the sales team, allowing you to:

- >Check stocks in real time
- >View your order history and track orders
- >View your invoices
- >Display retail prices
- >Place orders

<http://b2b.grouperossignol.com>

#### TOOLBOX

A platform provided for you by the Dynastar communication teams to access all brand content:

- >Videos
- >Photos
- >Consumer files
- >Technical descriptions of products

[grouperossignol.imagerelay.com](http://grouperossignol.imagerelay.com)

References	Sizes	Parameters/sidecuts	Tip/waist/tail	Radius	Weight	Construction	Sandwich full sidewall	Central sidewall	CAP	Core	Ash wood core	Poplar wood core	Beech wood core	Hybrid core: Poplar + PU	Hybrid core: Beech + PU	Hybrid core: Sapelly + PU	Hybrid core: Paulownia + PU	PU low density	Reinforcement	Ti Insert	Fiber glass	V-Tech	Ti Rocket Frame	Basalt/Fiber Isomatrix	Full Ti layer	Fiber glass Torsion Box	Main technology	Active Air Core	Hybrid Core	Wood Core	Rockers	Tip rocker	Tip & tail rocker	Shape	3D profile	Adaptive sidecuts			
M-MENACE 80 XPRESS	138-148-158-173																																						
M-MENACE 90 XPRESS	130-140-150-160-170-180																																						
M-MENACE 90	130-140-150-160-170-180																																						
M-TOUR 86	152-160-170-180																																						
M-TOUR 87 CA	152-160-170-179																																						
M-TOUR 99	152-160-170-178-186																																						
M-PRO 90	152-160-170-178-186																																						
M-PRO 99	152-160-170-178-186																																						
M-PRO RIDER	171-179-192																																						
M-FREE 99	171-185																																						
M-FREE 108	172-182-192																																						
M-FREE 118	180-189																																						
SPEED ZONE 4X4 78 XPRESS	144-164-171-179																																						
SPEED ZONE 4X4 563	158-164-171-179																																						
SPEED ZONE 4X4 763	158-164-171-179-185																																						
SPEED ZONE 4X4 963	164-171-179-185-192																																						
SPEED 263	149-157-170-178																																						
SPEED 363	155-162-170-178																																						
SPEED 563	155-162-170-178																																						
SPEED 763	155-162-170-178																																						
SPEED 963	155-162-170-178																																						
SPEED OMEGLASS MASTER SL KONECT	151-162-173																																						
SPEED OMEGLASS MASTER SL R22	151-162-173																																						
SPEED COURSE MASTER GS KONECT	149-157-170-178																																						
SPEED COURSE MASTER GS R22	149-157-170-178																																						
SPEED COURSE TEAM GS R21 PRO	135-144-151-165																																						
SPEED OMEGLASS TEAM SL R21	128-138-142-149																																						
SPEED WC GS R22	146-152-158-182																																						
SPEED COURSE WC GS R22	146-152-158-182																																						
SPEED COURSE WC FIS GS R22	101-107-111-188																																						
SPEED COURSE WC FIS GS FACTORY R22	102-107-111-193																																						
SPEED OMEGLASS WC SL R22	115-121-130-150																																						
SPEED OMEGLASS WC FIS SL R22	116-121-130-150																																						
SPEED OMEGLASS WC FIS SL R22	116-121-130-150																																						

# MAPPING

	TOURING	PISTE WOMEN	ALL MOUNTAIN WOMEN	FREE ALL MOUNTAIN W	TOURING W
References	DAJ7101	DAK2002	DAKX205	DAJN202	DAKM002
Sizes	150-160	155-160-165	142-149-156-163	150-159-164	154-162-170
Parameters/sidecuts	120-88-110	122-68-104	125-74-110	122-78-106	114-82-102
Tip/waist/tail	20	13	12	14	20
Radius	2300	3100	2800	3600	2500
Weight	2300	3100	2800	3600	2500
Construction	•	•	•	•	•
Sandwich full sidewall	•	•	•	•	•
Central sidewall	•	•	•	•	•
CAP	•	•	•	•	•
Core	•	•	•	•	•
Ash wood core					
Paulownia wood core					
Poplar wood core					
Cell core					
Hybrid core: Poplar + PU					
Hybrid core: Beech + PU					
Hybrid core: Sapelly + PU					
Hybrid core: Paulownia + PU					
PU low density					
Reinforcement					
Carbon Fiber					
Fiber glass					
V-Tech					
Ti Rocket Frame					
Basalt Fiber Isomatex					
Ti Insert					
Fiber glass Torsion Box					
Main technology					
Active Air Core					
Hybrid core					
Wood core					
Rocker					
Tip rocker					
Tip & Tail rocker					
Shape					
3D profile					
Adaptative sidecuts					

# MAPPING

	JUNIOR	DEMO RANGE	RENTAL
References	DAJBB01	DAJN302	DAK5002
Sizes	130-140-150-160	128-140	144-149-156-164-172
Parameters/sidecuts	111-67-97	104-74-98	119-75-100
Tip/waist/tail	9	6	13
Radius	2400	1700	3300
Weight	2400	1700	3300
Construction	•	•	•
Sandwich full sidewall	•	•	•
Central sidewall	•	•	•
CAP	•	•	•
Core	•	•	•
Ash wood core			
Poplar wood core			
PU			
Hybrid core: Poplar + PU			
Hybrid core: Beech + PU			
Hybrid core: Sapelly + PU			
Hybrid core: Paulownia + PU			
PU low density			
Reinforcement			
Carbon Fiber			
Fiber glass			
V-Tech			
Basalt Fiber Isomatex			
Ti Rocket Frame			
Ti Insert			
Full Ti layer			
Fiber glass Torsion Box			
Main technology			
Hybrid core			
Rocker			
Tip rocker			
Tip & Tail rocker			
Shape			
3D profile			
Adaptative sidecuts			







**DYNASTAR**

WE LIVE SKIING\_JOIN US

**SKIS ROSSIGNOL S.A.S.**

Société par Actions Simplifiée

Registered Capital 71.746.248 Euros

HQ: 98, rue Louis Barran, 38430 Saint-Jean de Moirans - France

056 502 958 RCS Grenoble

Intracommunity VAT No.: FR 280 56 50 29 58

Dynastar reserves the right to modify the models shown in this document without prior notice.

© Photos: Guy Fattal, Noah Wetzler, B-Long, Dom Daher, Arthur Bertrand, Mathis Dumas, Agence Zoom.